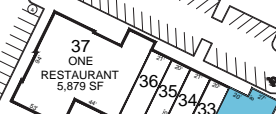
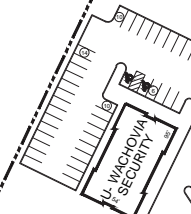
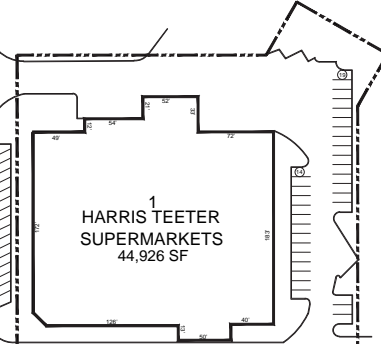
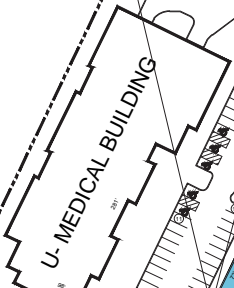
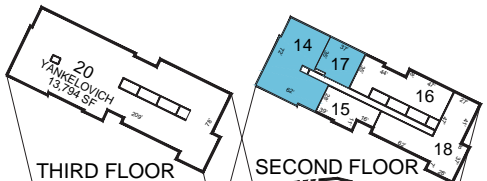


RALEIGH RD (SR 54)



MEADOWMONT LN

| TENANT INDEX | | |
|--------------|--------------------------------|--------|
| 1 | HARRIS TEETER | 44,926 |
| 2 | SUPERMARKETS | |
| 3 | THE UPS STORE | 1,514 |
| 4 | GREAT CLIPS | 1,000 |
| 5 | 2020 EYEWORKS | 1,201 |
| 6 | LOLA NAILS | 1,313 |
| 7 | GATEWAY BANK & TRUST CO. | 1,875 |
| 8 | LICKITY SPLIT | 1,261 |
| 9 | AVAILABLE | 2,444 |
| 10 | BRIXX | 3,049 |
| 11 | FIVE GUYS FAMOUS BURGERS | 2,663 |
| 12 | AND FRIES | |
| 13 | PRUDENTIAL YORK SIMPSON | 7,199 |
| 14 | UNDERWOOD REALTY | |
| 15 | AVAILABLE | 2,770 |
| 16 | AVAILABLE | 3,206 |
| 17 | NC NEUROBEHAVIORAL | 600 |
| 18 | ASSOCIATES | |
| 19 | MEADOWMONT DENTISTRY | 3,213 |
| 20 | AVAILABLE | 1,726 |
| 21 | CAROLINA CAPITAL MARKETS | 3,833 |
| 22 | YANKELOVICH | 13,794 |
| 23 | ORANGE COUNTY ABC STORE | 2,010 |
| 24 | PURE BARRE | 1,600 |
| 25 | AVAILABLE | 1,313 |
| 26 | FITNESS TOGETHER | 1,562 |
| 27 | MAUPIN TRAVEL | 1,574 |
| 28 | FIREHOUSE SUBS | 1,969 |
| 29 | CAFE CAROLINA AND BAKERY | 4,125 |
| 30 | CAJU | 2,610 |
| 31 | AVAILABLE | 1,022 |
| 32 | MEADOWMONT CLEANERS | 1,088 |
| 33 | MONKEES OF CHAPEL HILL | 1,509 |
| 34 | AVAILABLE | 2,613 |
| 35 | SALUTATIONS | 1,313 |
| 36 | SCOUT & MOLLY'S OF CHAPEL HILL | 1,562 |
| 37 | JESTER'S | 1,700 |
| | HIBACHI SUSHI | 1,328 |
| | ONE RESTAURANT | 5,879 |



MEADOWMONT VILLAGE

Meadowmont Ln & W Barbee Chapel Rd
CHAPEL HILL, NC 27517



AVAILABLE

Latitude:35.9060, Longitude:-79.0104



THIS DRAWING IS FOR GENERAL INFORMATION PURPOSES ONLY. ANY AND ALL FEATURES, MATTERS AND OTHER INFORMATION DEPICTED HEREON OR CONTAINED HEREIN ARE FOR ILLUSTRATIVE MARKETING PURPOSES ONLY. ARE SUBJECT TO MODIFICATION WITHOUT NOTICE. ARE NOT INTENDED TO BE RELIED UPON BY ANY PART AND ARE NOT INTENDED TO CONSTITUTE REPRESENTATIONS OR WARRANTIES AS TO OWNERSHIP OF THE REAL PROPERTY DEPICTED HEREON. THE SIZE AND NATURE OF IMPROVEMENTS TO BE CONSTRUCTED (OR THAT ANY IMPROVEMENTS WILL BE CONSTRUCTED) OR THE IDENTITY OR NATURE OF ANY OCCUPANTS THEREOF.

3300 Enterprise Parkway, Beachwood, OH 44122
Fax 216 . 755 . 1500 Phone 216 . 755 . 5500